

# SWINDON TOWN

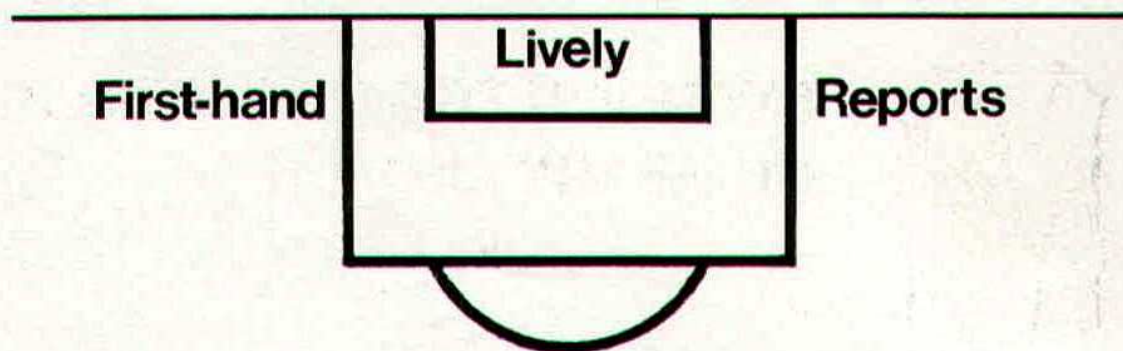
FOOTBALL CLUB

official programme



1/-





Complete Comprehensive Coverage

Close-up Action Shots Every Game

At home or away

**The Evening Advertiser**  
has it covered

**M<sup>c</sup>ILROYS**

the Department Store  
with that something extra *Service!*

*Free*

DELIVERIES  
ESTIMATES ON CARPETS & CURTAINS  
CARPET FITTING

WILLIAM McILROY (Swindon) LTD.

Tel. 5294





# SWINDON TOWN FOOTBALL COMPANY LIMITED

Registered Office: COUNTY GROUND, SWINDON

**President:** Mr. W. J. CASTLE

**Vice-President:** Mr. J. DAVIES

**Directors:**

**Chairman:** Mr. H. E. LANE

**Vice-Chairman:** Mr. R. FRICKER

Messrs. F. L. COLLINGS, A. W. DONE, M. EARLE, C. J. GREEN, F. PLYER,  
H. WILLIAMS, K. H. WILMER and Dr. J. NICHOLAS

**General Manager:** Mr. R. A. MORSE

**Team Manager:** Mr. F. FORD

**SATURDAY, 7th FEBRUARY, 1970**

**F.A. Challenge Cup – 5th Round**

## SWINDON TOWN v SCUNTHORPE

**Kick-off 3 p.m.**

### SWINDON TOWN

- 1 Downsborough
- 2 Thomas
- 3 Trollope
- 4 Butler
- 5 Burrows
- 6 Harland
- 7 Smith
- 8 Smart
- 9 Horsfield
- 10 Noble
- 11 Rogers
- 12 Jones

Colours:  
Red and White

### SCUNTHORPE

- 1 Barnard
- 2 Foxton
- 3 Barker
- 4 Deere
- 5 Atkin
- 6 Welbourne
- 7 Keegan
- 8 Cassidy
- 9 Kerr
- 10 Heath
- 11 Davidson
- 12

Colours:  
Blue

### OFFICIALS

**REFEREE:**

Mr. J. R. Osborne  
(Ipswich)

**LINESMEN:**

**Red Flag:**

Mr. K. D. Franklin  
(Stanmore)

**Yellow Flag:**

Mr. D. A. Burlingham  
(Bishops Stortford)



## *G. A. Streetly*

Tobacconist and Confectioner

**10 BOURNE ROAD  
MOREDON SWINDON  
Telephone 4956**

## **C. Goodenough and Sons**

**Removal and Storage Contractors**  
any distance

**25 Cricklade Street Swindon  
Telephone 4555 and 3855**

## *CECIL GREEN*

Artistic Decorations in all its branches

**12 Armstrong Street  
Swindon Wilts  
Telephone 4593**

## **W. J. SELWOOD**

Telephone Swindon 5884

### **Saddlery**

General Leather Goods Manufactured and  
Repaired to Your Individual Requirements

**103 BROAD STREET  
SWINDON WILTSHIRE**

## **Notton's Cafe**

**COUNTY ROAD**

200 yards from Ground

**Perfect meals at all times**

For High Class  
Central Heating, Plumbing  
Painting and Decorating  
Electrical Installations  
and Repairs

**NORTH WILTS  
Sanitary and Heating  
Co. Ltd.**

**NEWPORT STREET SWINDON  
Telephone 5373/4**



THE ALCOHOL FUEL

### **COATE GARAGE**

REPAIRS - OVERHAULS - WELDING  
SERVICING - REBORING - TYRES

Props. E. V. & W. H. Mattick  
Marlborough Road Swindon

## **Leese, Ing & Co. Ltd.**

Mineral Water and  
Squash Manufacturers

**LANSDOWN ROAD SWINDON**

**Telephone 22744**

## *Maylott Studios*

**For Group and Sports Photographs**

Official Photographer to  
Swindon Town Football Club

**31 Faringdon Road**

**Telephone 22792**

Always at your service

## *L. Bibby*

For all Types — Rags, Iron and Metal, etc.  
Spot Cash Paid. Please Telephone 2101  
and our van will call.

**THE PADDOCK ERMIN STREET  
STRATTON ST. MARGARET**



## news & views

Once again we are engaged in Cup-tie football, the competition which attracts the crowds, possibly because a decision must be reached. Already some supporters have visions of Wembley for a second time. Even our friend in the Football Pink writes in a most optimistic vein.

There is a long way to go, first we have to overcome this afternoon's hurdle, then there are still two more games, before we begin to think of Wembley. Today's game is a difficult proposition. Scunthorpe by virtue of their win at Sheffield Wednesday proved themselves a fine cup fighting team. To win at Hillsborough was a great achievement knowing what we do of that club, and the manager. It is rather a coincidence that Scunthorpe now visit Swindon. I expect Mr. Danny Williams thoughts will be cast this way today, although he has a very important engagement at Southampton. We wish him well.

We very much welcome our visitors today, especially as we have a very friendly feeling towards them, as they were our first opponents when we were newly promoted to Division 2 on Saturday, 24th August, 1963. The result, a win of 3—0, was rather flattering to Swindon — of the team that played that day, Dawson, Trollope, Smart and Rogers are still with us.

Mention was also made in the programme that day of the projected New Stand. "Regarding the proposed new stand, plans are still being discussed, regarding type and siting of the building. The Town Council (our landlords) have shown great interest, and been most helpful. They, through the Borough Surveyor, hope to see erected at the County Ground a stand unique in English football, one of outstanding design and structure. May all our hopes be realised."

It is good to announce that all our hopes are going to be realised after much discussion, and many meetings, and thanks to the magnificent co-operation of the Swindon Town Council. Work on the stand will definitely begin next month, and will probably take a year to complete. When that happens no doubt one of the happiest men in Swindon will be the Deputy Mayor, Alderman A. Bown, who throughout the long and protracted negotiations has been a great driving force in this project.

We played Scunthorpe (when both clubs were in Division 3) on 25th November, 1967. We were going through a rather lean period, and occupied 12th position in the league table, whilst our opponents, fighting desperately to avoid relegation, were bottom but one. A rather poor game ensued, the teams reading as follows:

Swindon: Downsborough; Dawson, Trollope; Butler, Nurse, Harland; Heath, Penman, Terry, Smart, Rogers.

Scunthorpe: Drake; Hemstead, Taylor; Naylor, Burrows, Blyth; Sloan, Barton, Colquhoun, Deere, Foxham.

Scorers: Terry (57), Rogers (60).

Attendance: 11,769.

Receipts: £2,046.

You will notice the centre-half, then in his third season with the club. At the end of the season he was of course transferred to Swindon, but unfortunately, Scunthorpe was relegated to Division 4.



# THE GREAT WESTERN HOTEL

(OPPOSITE SWINDON RAILWAY STATION)

The business man's hotel with a top class  
steak bar too!

Specialists in

LUNCHEONS and DINNERS  
WEDDING PARTIES and RECEPTIONS  
good food — quick service

**J. ARKELL and SONS LIMITED** Telephone SWINDON 22047

## Mills and Merricks Limited

16-17 Bridge Street Swindon

Telephone 5365/6

**"HOME OR AWAY"**

our function is to ensure that your home is  
tastefully and economically furnished

SWINDON'S COMPLETE HOUSE FURNISHERS

## New City Office Supplies Limited

Office and Stationery Suppliers  
to Industry and Commerce

6 Commercial Road Swindon

Telephone Swindon (STD Code 0793) 4605



## CLARK BROS. (Swindon) LTD

Building and Civil Engineering Contractors

CONSULT US FOR  
BUILDING AND CIVIL ENGINEERING  
CONSTRUCTION IN ALL ITS PHASES

**STRATTON ROAD**

**SWINDON**

Telephone Swindon 27261



## Supporters' Club Notes

On Thursday, 22nd January, vivid memories were revived in the Social Club. There was a special showing of the televised film of last year's Football League Cup Final at Wembley. The Club captain, Stan Harland, with several other players, also came to see the show, and I am sure that they were not disappointed. The original magic of that game made itself felt from the first few minutes, despite the fact that the game, in all its facets, were well and truly known beforehand. Also shown was the colour film of "Goal", built around every goal scored in the World Cup Football series of 1966. A topical evening to whet the appetites prior to the coming F.A. Cup and World Cup Final this year. What a year 1970 would be if we see two of the same teams again — one in each Final.

For those who may have missed the details of the Annual Supporters' Club Dinner and Dance here they are once again.

**Date:** Wednesday, 11th March.

**Where:** McIlroy's Ballroom, Regent Street, Swindon.

**Time:** Dinner 7 p.m. for 7.30 p.m.; Dance only 9.30 p.m. to 1 a.m.

**What:** Minestrone; Halibut au Gratin; Roast Beef and Yorkshire Pudding, Garnie; Pear Helene; Cheese and Biscuits; Coffee.

**Music:** Ken Kitching and his Band (everything for everybody is Ken's motto).

**Tickets:** 30/- Dinner and Dance; 7/6 Dance only (from Mrs. B. Ranger, Social Secretary, or any Committee member).

This is our annual get-together with most of the Directors, players, staff, and their ladies, of the parent Football Club. It also provides an opportunity for many supporters to get a good close-up look at any trophies acquired since the previous year's Dinner. Those who attended on previous years will recall such collector's items as the Sunday Mirror Giant Killers Cup, the Football League Cup and the "Crowd of the Season" silver football trophy, not to mention the silver bowl won by the Town Youth team in Holland a few years ago. On 7th March, of course, the Football League Cup will be in the possession of this year's winners by about 4.40 p.m., so we shall not be seeing it this year. However, its place will be taken by the Football League Cup Winners Cup, which was acquired when the lads beat the Italian team, A.S. Roma, on a 5—2 aggregate last September.

Finally, a warm welcome to any Scunthorpe Supporters' Social Club members who wish to join us in our Social Club before or after today's match. We shall be pleased to see you.

## Face in the crowd — is it you?



In all future editions of this Season's programme we shall publish a photograph of a small section of the crowd at a previous match, one member of which will be clearly indicated by means of a circle. This person will be entitled to a free seat at the next match on producing the programme at the office.



WE AIM TO PLEASE — TRY US

# Tunleys

(1)

Glass (2)

Wallpaper (3)

Paint (4)

Polishes (5)

Artist Materials (6)

Prints (7) Ladders (8) Mirrors (9) Brushes (10) Aladdin Heaters (11)

MEMBERS OF THE



12/13 Gloucester Street Swindon Wiltshire



throughout the West

you will find Bradley Estates beautifully situated to meet the requirements of modern living. If you are thinking about a new home and would like to receive full details of our current and planned estates write now to 74 Victoria Road Swindon Wiltshire. Please send me details of

- ☐ Green Meadow Estate, Swindon, Wiltshire
- ☐ Nythe Estate, Swindon, Wiltshire
- ☐ Monkton Park Estate, Chippenham, Wiltshire
- ☐ Park Hill Estate, Frome, Somerset
- ☐ Damory Down Estate, Blandford Forum, Dorset
- ☐ Harkwood Farm Estate, Poole, Dorset
- ☐ Roman Way Estate, Bourton-on-the-Water, Gloucestershire

Name.....

Address.....



**BRADLEYESTATES**



# our visitors



## SCUNTHORPE UNITED FOOTBALL CLUB LIMITED

Pen Pictures 1969/70

### GOALKEEPERS

#### GEOFFREY BARNARD

Born Southend-on-Sea. Height 5ft. 11ins. Weight 12st. 12lbs. Signed from Norwich City in July 1968 after making several appearances in their Division 2 side. He was ever present in the Scunthorpe United team in season 1968/69.

#### STEPHEN DRAKE

Born Goole. Height 5ft. 11ins. Weight 11st. Previously with Huddersfield Town before joining Scunthorpe United in September 1967. Regular Reserve Team goalkeeper.

### FULL-BACKS

#### JOHN BARKER

Born Huddersfield. Height 5ft. 11ins. Weight 11st. 5lbs. Son of the Club's chief scout and former full-back Jeff Barker. Joined the Club on leaving school, and after experimenting in various positions, established a First Team place at left-back. He made 29 Football League appearances last season.

#### GRAHAM FOXTON

Born Harrogate. Height 5ft. 8ins. Weight 11st. Signed as an apprentice professional in July 1965 and has graduated through the Youth Team into a regular member of the Reserve Team. He has played in the First Team on several occasions.

#### NIGEL JACKSON

Born Pudsey. Height 5ft. 8ins. Weight 10st. 3lbs. A young defender of considerable promise. Signed professional forms for the "Irons" on the 28th June, 1968 after playing as an apprentice professional for the Club for two years. He made 8 Football League appearances last season.

### HALF-BACKS

#### MICHAEL ATKIN

Born Scunthorpe. Height 5ft. 10½ins. Weight 12st. 7lbs. Signed professional forms in September 1969. Captained the Lincolnshire Grammar Schools F.A. and shows considerable promise. First Team debut at Lincoln in October 1969.

#### JIM CURRIE

Born Scotland. Height 5ft. 11ins. Weight 12st. 4lbs. Signed from Campsie Black Watch, a Scottish Junior Club in September 1968. Made his First Team debut against Southend United at The Old Show Ground on the 12th May, 1969.

#### ANGUS DAVIDSON

Born Forfar, Scotland. Height 5ft. 6ins. Weight 10st. 6lbs. Signed on a free transfer in July 1969 from Grimsby Town, where he made several First Team appearances for the "Mariners". He is a tight marking wing-half.



## DON ROGERS SPORTS

**29 FARINGDON ROAD SWINDON**

Telephone 27378

Main suppliers to Swindon Town Football Club

Stockists of

**All leading makes of Football Boots and Clothing**

**Table Tennis, Badminton, Rugby and Hockey equipment**

**IN FACT THE COMPLETE SPORTS OUTFITTER**

## RIMES of SWINDON

POPULAR EXCURSION TO

Fare

adult child

Mon., 9th February, 1970 SHEFFIELD

Dept. 12.30 p.m.

27/6

9/-

SERVICE DIRECT TO THE GROUND  
ALL SEATS NUMBERED AND RESERVED

Book now at

**102 Commercial Rd., Swindon**

Telephone 27113

**46 Cricklade St., Cirencester**

Telephone 3479

or with any of Rimes Booking Agents

## *Dobell Shearman & Co. Ltd.*

**HIGH STREET SWINDON**

Telephone 4961

**FANCY and COMMERCIAL STATIONERS**

**TYPEWRITERS and OFFICE EQUIPMENT**

Greetings Cards for all Occasions  
from Leading Art Publishers



## W. J. CASTLE

Office and Bakery

**4 and 5 MARKET STREET**

**SWINDON**

Telephone 22017

Specialists—

BIRTHDAY CAKES - WEDDING CAKES

DAIRY CREAM - PASTRIES

BUNS - ROLLS - SPONGES





## **OUR VISITORS (continued)**

### **STEPHEN DEERE**

Born Norwich. Height 6ft. 1in. Weight 11st. An intelligent utility player of considerable promise who was signed as a full-time professional in October 1967 from Norwich City where he was an amateur on their books. He made 38 Football League appearances last season.

### **MERVYN FRIAR**

Born Doncaster. Height 6ft. Weight 13st. 7lbs. Reserve Team centre-half who was signed from a local club called Winterton Rangers. He shows considerable promise.

### **RAYMOND HOLT**

Born Thorne. Height 5ft. 11ins. Weight 11st. 12lbs. Signed from Halifax in July 1968 and plays at centre-half having given previous service to Huddersfield Town and Oldham Athletic. He made 35 Football League appearances last season.

### **DON WELBOURNE**

Born Scunthorpe. Height 5ft. 10ins. Weight 11st. Signed professional forms in March 1967 after service as an apprentice professional. A local boy who attended a Scunthorpe school and is the younger brother of the Watford player, Duncan Welbourne. He made 36 Football League appearances last season.

## **FORWARDS**

### **NIGEL CASSIDY**

Born Sudbury. Height 5ft. 10ins. Weight 12st. 10lbs. Signed from Norwich City in December 1968. Originally a wing-half who was converted into a goal-scoring centre-forward at Lowestoft from where he was signed by Norwich City. He made 25 Football League appearances last season.

### **TERRY HEATH**

Born Leicester. Height 5ft. 7ins. Weight 11st. 5lbs. An inside-forward who signed from Hull City in March 1968. A midfield player with the ability to score goals. He was the Club's leading goal scorer in the 1968/69 season, with 15 goals to his credit in his 32 Football League appearances.

### **KEVIN KEEGAN**

Born Doncaster. Height 5ft. 5ins. 10st. 3lbs. Joined as an apprentice professional in December 1967. After making great progress was signed full-time in December 1968. Commands a regular First Team position. He made 29 Football League appearances last season.

### **GEORGE KERR**

Born Scotland. Height 5ft. 10ins. Weight 11st. 7lbs. Signed from Oxford United as an inside-forward in February 1968. Club Captain in season 1968/69 when he made 42 Football League appearances and scored 13 goals. He is a Scot whose previous clubs before Oxford United were Barnsley and Bury.

### **BARRY LINDSEY**

Born Scunthorpe. Height 5ft. 5ins. Weight 9st. 10lbs. Attended a local school and signed as a full-time professional in April 1961, having developed through the Club's junior ranks. He is an inside-forward and is an excellent ball player. He made 15 Football League appearances last season.

### **GRAHAM RUSLING**

Born Keadby, near Scunthorpe. Height 5ft. 11ins. Weight 12st. 7lbs. Graham is a local youngster who plays either as a centre-forward or inside-man. He made 4 Football League appearances last season.



# Division I I

## Fixture List

1969

### August

9 Blackburn Rovers	(A) 0—2
13 Cardiff City	(A) 2—2
16 Carlisle United	(H) 2—2
19 Cardiff City	(H) 2—1
23 Aston Villa	(A) 2—0
30 Charlton Athletic	(H) 5—0

### September

2 League Cup (2) Swansea	(A) 3—1
6 Blackpool	(A) 2—3
13 Oxford United	(H) 0—0
16 Middlesbrough	(A) 0—0
20 Queen's Park Rangers	(A) 0—2
24 League Cup (3) Oxford	(A) 0—1
27 Leicester City	(H) 1—1
30 Millwall	(H) 2—1

### October

4 Bolton Wanderers	(A) 1—0
7 Carlisle United	(A) 2—2
11 Sheffield United	(H) 2—1
18 Hull City	(H) 1—0
25 Portsmouth	(A) 1—3

### November

1 Norwich City	(H) 2—0
8 Birmingham City	(A) 0—2
15 Watford	(A) 0—0
22 Huddersfield Town	(H) 2—1
29 Preston North End	(A) 1—3

### December

6 Bristol City	(H) 1—1
13 Oxford United	(A) 0—0
20 Blackpool	(H) P
26 Aston Villa	(H) 1—1
27 Charlton Athletic	(A) 1—1

1970

### January

3 F.A. Cup Blackburn	4—0
10 Queen's Park Rangers	(H) 0—0
17 Leicester City	(A) 2—0
24 F.A. Cup (4) Chester	(H) 4—2
31 Bolton Wanderers	(H) 3—2

### February

7 F.A. Cup (5) Scunthorpe	(H) .....
9 Sheffield United	(A) .....
14 Blackburn Rovers	(H) .....
21 Portsmouth	(H) .....
28 Hull City	(A) .....

### March

7 Huddersfield Town	(A) .....
14 Preston North End	(H) .....
21 Bristol City	(A) .....
28 Watford	(H) .....
30 Norwich City	(A) .....
31 Birmingham City	(H) .....

### April

4 Millwall	(A) .....
14 Middlesbrough	(H) .....

## Appearances

Name	Div. II	League	F.A.	Cup
		Cup	Cup	Winners
Downsborough	29	2	2	2
Thomas	29	2	2	2
Trollope	29	2	2	2
Butler	29	2	2	2
Burrows	28	2	2	1
Harland	29	2	2	2
Smith	15 (1)	2	2	2
Horsfield	28	2	2	2
Smart	29	2	2	2
Noble	26	2	1	2
Rogers	23	2	2	2
Jones	8 (5)		1	(1)
Blick	1 (4)			1
Heath	15 (1)			
Down	(1)			
Penman	1		(1)	

(Playing as substitute in brackets)

## Goalscorers

Name	Div. II	League	F.A.	Cup
		Cup	Cup	Winners
Horsfield	12		3	3
Noble	9	3		1
Jones	4		1	1
Rogers	5		1	
Smith	2		1	
Burrows	1			
Trollope	1			
Thomas	1			
Smart	2		1	
Butler			1	
Opponents	1			



# League Table – Division II

(up to and including Tuesday, February 3rd, 1970)

	P	W	D	L	F	A	P
Huddersfield Town	29	17	7	5	48	27	41
Sheffield United	30	16	5	9	57	27	37
Blackburn Rovers	30	16	5	9	41	34	37
Cardiff City	29	14	7	8	47	30	35
Queen's Park Rangers	30	14	6	10	49	39	34
Middlesbrough	28	14	6	8	37	30	34
<b>Swindon Town</b>	<b>29</b>	<b>11</b>	<b>12</b>	<b>6</b>	<b>38</b>	<b>31</b>	<b>34</b>
Blackpool	28	12	9	7	37	35	33
Leicester City	29	11	9	9	43	40	31
Carlisle United	30	12	7	11	45	42	31
Bristol City	29	10	9	10	36	33	29
Portsmouth	30	10	8	12	48	54	28
Birmingham City	29	9	8	12	41	49	26
Oxford United	28	8	9	11	22	29	25
Millwall	29	7	11	11	33	44	25
Hull City	28	10	4	14	44	49	24
Bolton Wanderers	29	8	8	13	43	47	24
Norwich City	28	10	4	14	26	34	24
Charlton Athletic	29	5	13	11	26	52	23
Preston North End	29	7	8	14	30	40	22
Watford	29	7	7	15	32	37	21
Aston Villa	27	4	10	13	23	42	18

## Key of the Board

### First Section

A—Carlisle United v. Middlesbrough  
 B—Leeds United v. Mansfield Town  
 C—Liverpool v. Leicester City  
 D—Northampton T. v. Manchester Utd.  
 E—Queen's Park Rangers v. Derby Cty.  
 F—Watford v. Gillingham  
 G—Arsenal v. Stoke  
 H—Manchester City v. Notts Forest  
 I—Southampton v. Sheffield Wed.  
 J—Sunderland v. Everton  
 K—West Ham v. Coventry City  
 L—Wolves v. Tottenham Hotspur  
 M—Aston Villa v. Cardiff City  
 N—Blackburn Rovers v. Birmingham C.  
 O—Blackpool v. Millwall  
 P—Bristol City v. Portsmouth  
 Q—Charlton v. Huddersfield Town  
 R—Oxford v. Hull City  
 S—Barnsley v. Bradford City  
 T—Brighton v. Shrewsbury Town

### Second Section

A—Halifax Town v. Walsall  
 B—Luton Town v. Doncaster Rovers  
 C—Reading v. Orient  
 D—Rochdale v. Plymouth  
 E—Rotherham v. Bristol Rovers  
 F—Torquay v. Barrow  
 G—Bradford v. Colchester  
 H—Crewe v. Exeter  
 I—Darlington v. Grimsby  
 J—Hartlepool v. Chester  
 K—Lincoln v. Aldershot  
 L—Newport v. Peterborough  
 M—Notts County v. Chesterfield  
 N—Port Vale v. York  
 O—Swansea Town v. Oldham



## *Forthcoming Matches on This Ground*

**TUESDAY, 10th FEBRUARY, 1970**

**Football Combination Cup**

**SWINDON TOWN v. BRISTOL ROVERS**

**Kick-off 7.30 p.m.**

**SATURDAY, 14th FEBRUARY, 1970**

**Division II**

**SWINDON TOWN v. BLACKBURN ROVERS**

**Kick-off 3 p.m.**

**SATURDAY, 21st FEBRUARY, 1970**

**Division II**

**SWINDON TOWN v. PORTSMOUTH**

**Kick-off 3 p.m.**

---

## *Previous Matches*

**DIVISION II**

**SATURDAY, 31st JANUARY, 1970**

Beat Bolton Wanderers (Home) 3—2.

Team: Downsborough; Thomas, Trollope; Butler, Burrows, Harland; Smith, Smart, Horsfield, Noble, Rogers.

Scorers: Rogers (2), Horsfield.

Attendance: 18,880.

Referee: Mr. G. Hartley (Wakefield).

### **FOOTBALL COMBINATION CUP**

**TUESDAY, 3rd FEBRUARY, 1970**

Lost to Arsenal (Home) 4—0.

Team: Jones; Desmeules, Claypole; Handrick, Dawson, Bailey; Heath, Penman, Down, Dangerfield, Porter.

Referee: Mr. A. P. Hobdell (Aldershot).

### **HELLENIC LEAGUE**

**SATURDAY, 31st JANUARY, 1970**

Lost to Witney (Away) 1—0.

Team: Grzadkowski; Allen, Claypole; Ackling, Grubb, Dakin; Moss, Stroud, Gleed, Bailey, Kale.



## The man in the middle



### JOHN OSBORNE (Ipswich)

Commenced refereeing in the Ipswich and District League 1948, then graduated to the Eastern Counties League and the Football Combination. Promoted to the Football League Referees List 1961.

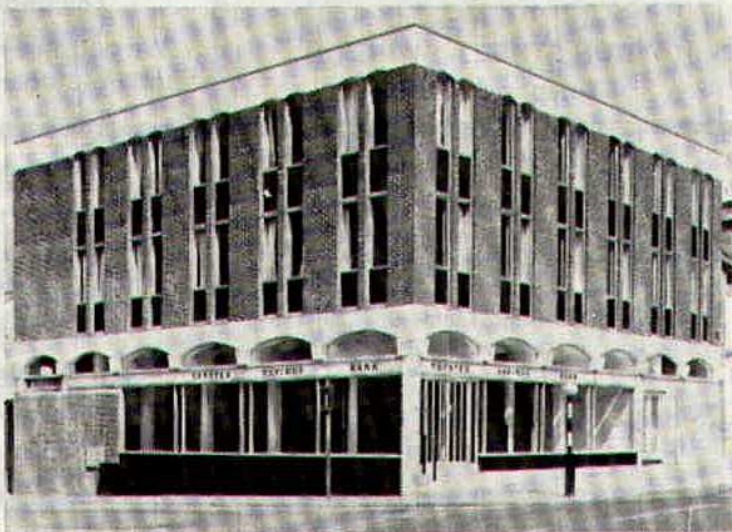
For nine years he was the Hon. Organiser for Suffolk Boys Club, becoming team trainer to England Boys Club soccer team.

Now Chairman of Ipswich Referees Society, which has a record membership of 120 Referees.

Hobbies include bowls, gardening and lecturing on football to local clubs and societies.

**T** RUSTEE  
**S** AVINGS  
**B** ANK

93 Commercial Road  
Swindon



#### Facilities include

- CURRENT ACCOUNT SERVICE
- 24 HOUR CASH DISPENSER
- T.S.B. UNIT TRUST
- CONTRACTUAL SAVINGS SCHEME  
(giving substantial Tax benefits)

**INTEREST 7% IN THE  
SPECIAL INVESTMENT DEPT.**



## Hatton's Newsagency

A. J. D. & N. J. Woodhouse

Newsagents :: Tobacconists  
Confectioners

Agents for Wessex School of Motoring  
Booking Agents for Rimes Coaches

6 REGENT CIRCUS (near G.P.O.)  
Telephone Swindon 22731

## BRETTS

PET and GARDEN SUPPLIES

32-33 Commercial Road  
and  
6 Cromwell Street Swindon

## THE PORK SHOP

(Swindon Bacon Curing Co. Ltd.)

Specialists in

**Bacon - Pork - Cooked Ham**

50 FLEET STREET SWINDON  
Telephone 22122

## J. WILMER

Coal Merchants

St. Margaret's Road Swindon

Telephone 22535

## SOUTHERN LAUNDRY CO. LTD.

Launderers and Dry Cleaners

HAYDON STREET SWINDON  
Telephone 4161

At Your Service

## A. E. LUDLOW LIMITED

Wholesale Fruit and Potato Merchant

COLBOURNE STREET  
SWINDON WILTSHIRE  
Telephone Swindon 3583

We deliver Fresh Fruit, Vegetables  
and Potatoes daily—**Wholesale Only**

FOR ALL YOUR ANGLING NEEDS  
CONSULT

## Frank Woodward

Swindon's Fishing Tackle Specialist

25 HAVELOCK STREET SWINDON  
Telephone 3879

For Paints of Good Quality

## H. S. Hodges & Sons

(SWINDON) LTD.

Cricklade Road Swindon

Telephone 22422

Dulux, Brolac, Valspar, Wallcharm, etc.

24 hour Delivery  
Service

YOUR COMPLETE JANITORIAL SERVICE

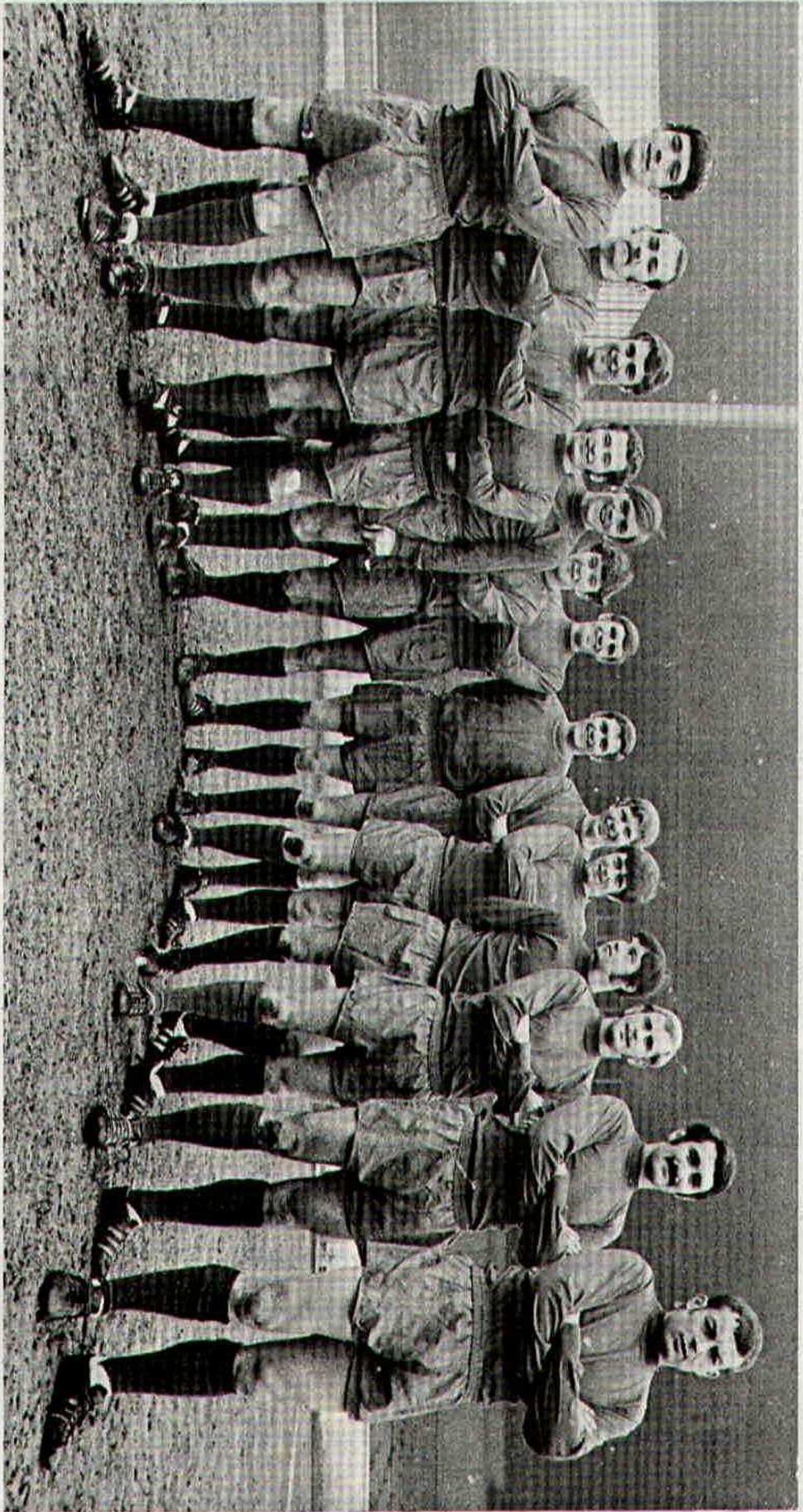
## Wilts Cleaning Supply Service

Kembrey Warehouse Rear 255 Cricklade Road  
SWINDON

Telephone 21012

Represented by G. ALEXANDER  
Telephone Swindon 27833





Left to right: Kevin Keegan, Terry Heath, Nigel Jackson, Barry Lindsey, Mick Atkin, Angus Davidson, Ray Holt, Geoff Barnard, Stephen Deere, Graham Rusling, Don Welbourne, Graham Foxton, Nigel Cassidy, George Kerr.



## HARRY LUNN

(Ex NOTTS COUNTY, PORTSMOUTH and SWINDON TOWN F.C.)

**Fish Bar and Restaurant**  
**27-28 COMMERCIAL ROAD SWINDON**

RESTAURANT open 9 a.m. to 10 p.m. for

**Snacks - Lunches - High Teas - Evening Meal**

FISH BAR open Mid-day and Evenings until 11 p.m.

## HULFORD MOTORS LIMITED

### SELF DRIVE HIRE

Fleet of 1969/8 Fords      Escorts De-Luxe  
Cortinas De-Luxe      Cortinas 1600 Estate  
(Bench Seat Column Change) — Zephyr V4s

### SHRIVENHAM ROAD

(200 yards from Football Ground)

**Telephone 4934**

Large Car Park Available

## COWLEY BROS. (Wroughton) LTD.

BUILDERS OF MODERN ATTRACTIVE  
HOUSES and BUNGALOWS

Developments at

**SWINDON**

**WROUGHTON**

**BADBURY**

Office

**28 NEWPORT STREET**  
**SWINDON**

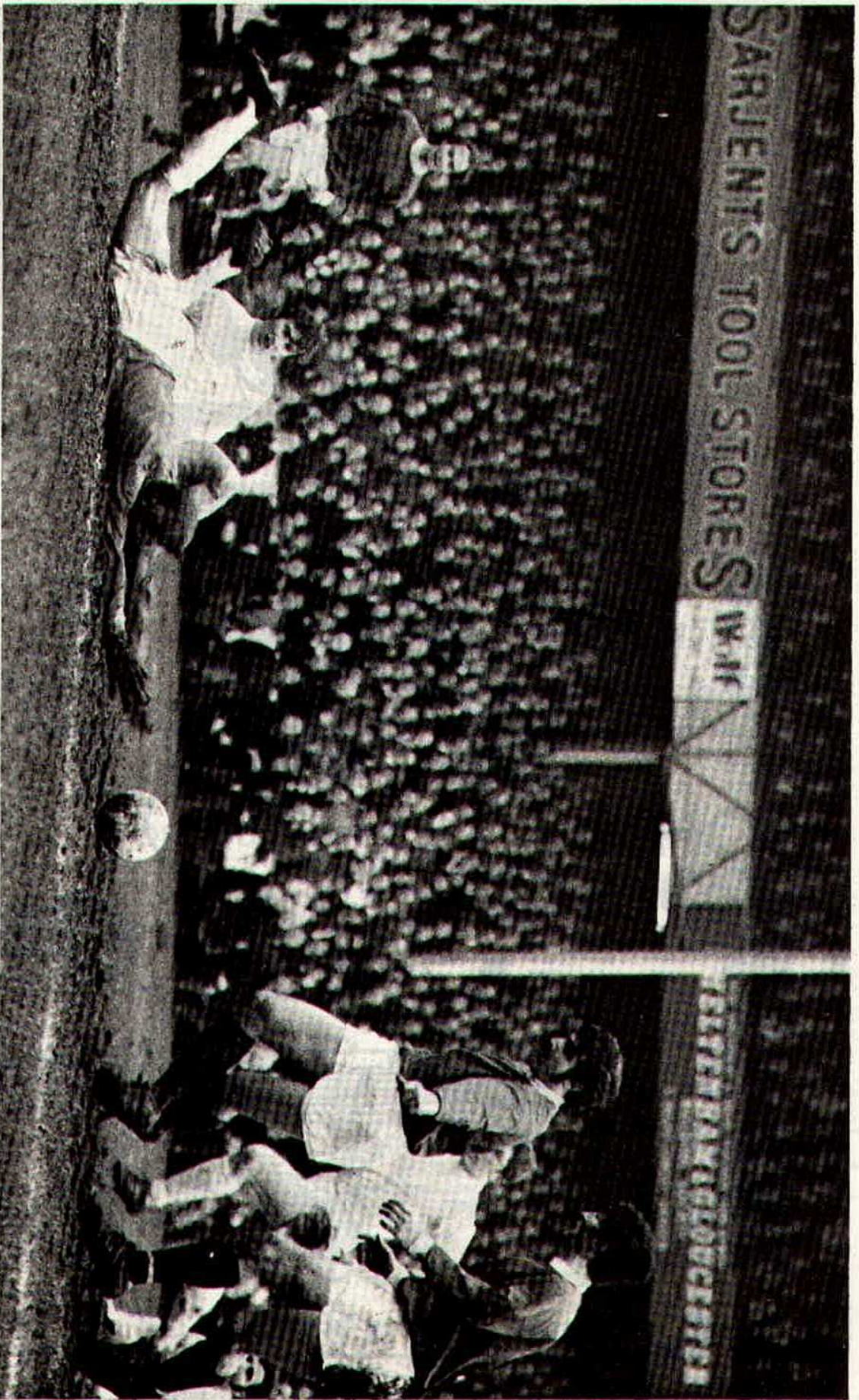
Telephone Swindon 6870

Reserved for British Rail



**Inter-City**





Don Rogers about to get his first league goal at the County Ground this season.

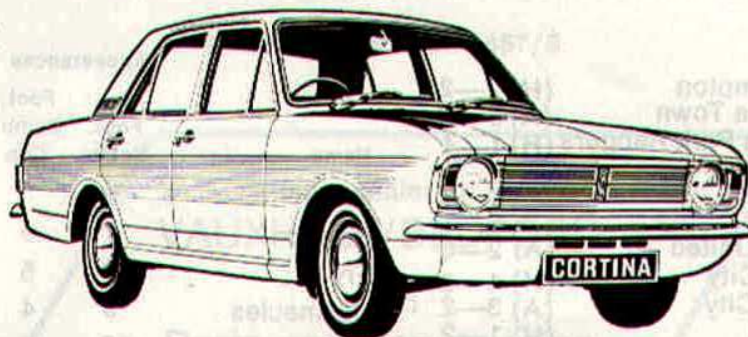
Photograph by R. Marsh.







Suppliers to the Swindon Team  
**MAY WE SUPPLY YOU?**



**EARLE**

of Chippenham Limited

MAIN

**FORD**

DEALERS

**COCKLEBURY ROAD CHIPPENHAM**

Telephone 3255

**H. HIBBERD LIMITED**  
**FOR YOUR EARTH-MOVING EQUIPMENT**  
*Plant Hire Contractors*



**40 NEWPORT STREET SWINDON**

Telephone Swindon 6125



# Football Combination

## Fixture List

### 1969

#### August

9	Southampton	(H)	2—2
16	Swansea Town	(A)	0—1
23	Queen's Park Rangers	(H)	1—4

#### September

4	Oxford United	(A)	2—0
6	Bristol City	(H)	1—2
17	Cardiff City	(A)	3—2
20	Arsenal	(H)	1—2
27	Luton Town	(A)	0—2

#### October

4	Reading	(H)	1—2
7	Bristol Rovers	(A)	P
11	Ipswich Town	(A)	1—0
21	Bristol City	(A)	2—7
25	Crystal Palace	(H)	1—0

#### November

8	Plymouth Argyle	(H)	3—1
15	Crystal Palace	(H)	1—2
22	Swansea Town	(A)	1—1
29	Tottenham Hotspur	(H)	1—4

#### December

8	Peterborough United	(A)	0—2
13	Leicester City	(H)	0—2
17	Plymouth Argyle	(A)	1—1
20	West Ham United	(A)	3—1
27	Swansea Town	(H)	0—2

### 1970

#### January

27	Arsenal	(A)	0—5
----	---------	-----	-----

#### February

3	Arsenal	(H)	0—4
10	Bristol Rovers	(H)	.....
17	Walsall	(A)	.....
24	Northampton	(A)	.....

#### March

7	Birmingham City	(H)	.....
11	Crystal Palace	(A)	.....
18	Norwich City	(A)	.....
21	Bristol Rovers	(A)	.....

#### April

4	Bournemouth & B.A.	(H)	.....
---	--------------------	-----	-------

Name	Appearances		Goalscorers	
	Foot. Comb.	Foot. Cup	Foot. Comb.	Foot. Cup
Price	1			
Dawson	7	5		
Fry	14	5		
Desmeules	9	4		
Blick	16	6		
Handrick	16	7	1	
Heath	4	2		
Penman	11	3	1	
Down	13	5	6	
Dangerfield	14 (1)	6	10	1
Moss	4	1		1
Bailey	11 (2)	6	1	
Grzadowski	2			
Hubbard	15	5		
Jones (R)	11	5		
Allen (K)	8	3		
Jones (C)	4	2		
Wetson	1	1		1
Claypole	10	3		
Porter	2	4	1	1
Allen K. R.	2	2		
Smith		1		1
Boyd		1		

(Playing as substitute in brackets)



---

# AKERS GARAGE LIMITED

THE STREET MOREDON SWINDON WILTSHIRE

Telephone Swindon 3457/8

main dealer for  
**VAUXHALL/BEDFORD**  
and  
**Parts and Accessories**  
**Sales and Service**

Showrooms open  
MONDAY to FRIDAY — 8 a.m. to 8 p.m.  
SATURDAY — Closed 7 p.m.  
SUNDAYS — 10 a.m. to 2 p.m. for Petrol and Viewing



MODERN LIVING IN EXPERIENCED HANDS

Wilson homes are the result of over 60 years experience in house building. The Company Architect and his design team are always researching into the ever changing requirements of home buyers, to give them better designed homes, which are easy to run, easy to maintain and comfortable to live in.



All our houses and bungalows are built to the stringent specification of the National House Builders Registration Council who will guarantee your home for 10 years.

Visit a Wilson Show Home and you will see for yourself why Wilson's have such a reputation in giving value for money.

**WILSON**

(Swindon) LTD., 90-92 Commercial Road, Swindon Telephone 6361 (3 lines)

---



## **seating manufacturers for Stadium Seats Ltd**

- \* Heavy, medium and light steel fabrication
- \* Custom made production line equipment
- \* Ancillary work for industry and the building trade

**FAST EFFICIENT SERVICE BY**



**MARTYN LYN SHAW LTD**

**BOUNDARY WORKS - STRATTON ROAD - SWINDON - WILTS**

**Telephone 21844**

## **spectator seating in high density polyethylene**

- \* Supplied to over 36 Football League clubs
- \* Any colour. No maintenance
- \* Industrial seats for the food, electronics and pharmaceutical industries
- \* Largest supplier of spectator and industrial seating in Europe

**STADIUM SEATS LTD**

**STRATTON ROAD - SWINDON - WILTS Telephone 21844**